

SMASH PALACE Resene's Karen Walker Paints put catwalk colour on your walls



MODERN MOULD

'Panton' chair by Verner Panton from Hella Jongerius colour range, manufactured by Vitra, \$485 from Cite, citeitd.co.nz

WITTY KNIT

Hand knitted bonnet, \$49 from Madder and Rouge, madderandrouge.co.nz



MEASURE FOR MEASURE

'Modular' by Le Corbusier manufactured by Vitra, \$135 from Cite, citeitd.co.nz

CUTE CUPID

'The Lover II' by Jamie Hayon for Lladro, (from the Fantasy collection) \$1531, from Design 55, design55.co.nz



21 AGAIN

Card \$7.95 from The Coolstore Ltd, thecoolstore.co.nz



Resene 'Periglacial Blue'



Resene 'Crisp Green'



Resene 'Foggy Grey'

All colours by Karen Walker Paints, available from Resene. Testpots \$5 from Resene ColorShops, resene.co.nz



Catwalk images from Karen Walker's autumn/winter collection at New York Fashion Week, February 2009



THREADED

Linen thread, \$15 Flotsam & Jetsam, flotsamandjetsam.co.nz

FASHION

PRODUCT STYLING TRUDIE KROEF PHOTOGRAPHY FLASH STUDIOS

FASHION TRENCHES

Karen Walker's earthy shades make bold shapes this spring

FASHION

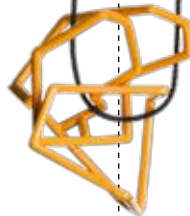


Catwalk images from Karen Walker's autumn/winter collection at New York Fashion Week, February 2009



ALL YOU NEED IS...

'LOVE' papeweight by Robert Indiana, \$195 from Design55, design55.co.nz



WIRED

'Wire crystal pendant' by Anna Wallis, \$380 from Fingers Contemporary Jewellery, fingers.co.nz

FEATHERS

Wallpaper by Carly Margolis for Cavern, POA from Netti & Gee, nettiandgee.co.nz



NICE JUGS

Glass jugs, \$75 and \$85 from Flotsam & Jetsam, flotsamandjetsam.co.nz



SEAT IN ARCHITECTURE

'Wiggle' stool by Frank Gehry, manufactured by Vitra, \$870 from Cite, citeld.co.nz



Resene 'Daybreak Yellow'



Resene 'Clouded Blue'



Resene 'Grain Brown'



SKULL IT BACK

'Pawns' by Wayne Youle, \$350 each from Tim Melville Gallery, timmelville.com

CHILL PILL

'A Bitter Pill to Swallow' by Wayne Youle, \$1250 from Tim Melville Gallery, timmelville.com



BASS NOTES

Inky black backdrops make Karen Walker's Resene colour accents pop



FRONT ROW SEAT

'Uniform' chair by Alexander Taylor for Established & Sons, from \$1100 from Simon James Design, simonjamesdesign.com



FASHION

Catwalk images from Karen Walker's autumn/winter collection at New York Fashion Week, February 2009



NECK LACE

'Bows' by Jennifer Braithwaite-Leather, \$395 from Fingers Contemporary Jewellery, fingers.co.nz



OFF THE WALL

Lizzy Allen wallpaper by Lizzy Allen, POA from Netti & Gee, nettiandgee.co.nz



Resene 'Fuscous Grey'



Resene 'Ashen Lavender'



Resene 'Clementine Orange'



JE M'APPELLE

French name tags, \$39 each from Madder and Rouge, madderandrouge.co.nz

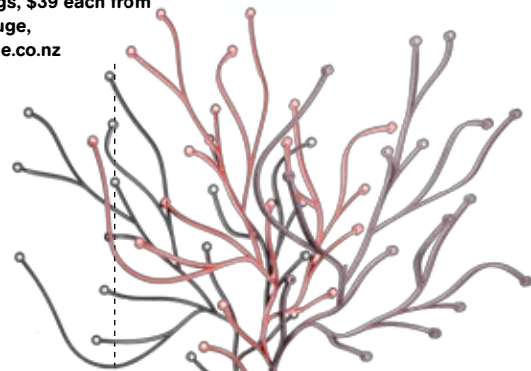
SWAN IN

'Swans' earthenware by Martin Poppelwell, \$89 each from Anna Bibby Gallery, annabibbygallery.com



OLD MASTER

Vintage Portrait, \$350 from Flotsam & Jetsam, flotsamandjetsam.co.nz



TWIGGY

'Algue' wall divider by Ronan and Erwan Bouroulle manufactured by Vitra, \$250 (box of 50) from Cite, citeltd.co.nz

BLUE MOODS Cool colours from Karen Walker and Resene highlight interior accents



FASHION

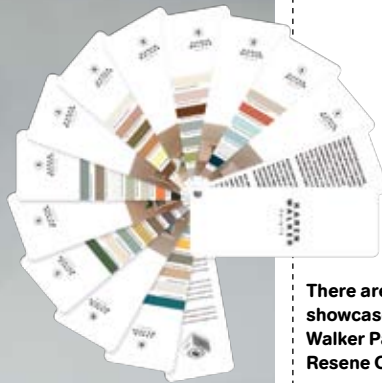
Catwalk images from Karen Walker's autumn/winter collection at New York Fashion Week, February 2009



Resene 'Powder Blue'



Resene 'Celestial Blue'



There are 42 colours showcased in the Karen Walker Paints range from Resene ColorShops, resene.co.nz



WELL LIT

'Torch' light by Sylvain Willenz for Established & Sons, \$376 from Simon James Design, simonjamesdesign.com

WEAR IT

'Glean' necklace by Pauline Bern-Wood, \$350 from Fingers Contemporary Jewellery, fingers.co.nz



ICE COLD

'Lily' vase \$255, 'Handle up' jug \$359 and 'Bulb' vase \$79 by Dinosaur Designs, from Madder and Rouge madderandrouge.co.nz

NO EVIL

'Three Wise Monkeys' Gianni Rose Soap, \$59 The Coolstore Ltd, thecoolstore.co.nz



CROSSOVER

Side table by Nathan Goldsworthy, \$825 from Simon James Design, simonjamesdesign.com

PETITE RANGE

'Untitled' oil painting by Emily Wolfe, \$2900 each from Anna Bibby Gallery, annabibbygallery.com

